

O BIM e a digitalização da construção

14 de junho 2019 | Coimbra



Olá!

Cláudia Antunes

Arquiteta | Pós graduada em “BIM in Integrated Project Delivery”

BIM Trainer & Consultant | StratBIM®

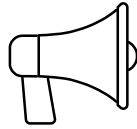
Contactos:

claudiaantunes@stratbond.com

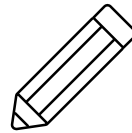
+351 914 969 065



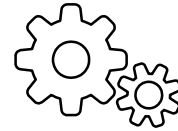
StratBIM® | Soluções BIM



DIVULGAÇÃO



FORMAÇÃO



IMPLEMENTAÇÃO



Índice

- ① Enquadramento
- ② BIM para Fabricantes
- ③ Soluções BIM
- ④ Conclusões

1

Enquadramento

BIM no Mundo e em Portugal.



Construction technology trends for 2019

- Augmented reality
- Construction software and Data Ecosystem
- **BIM - Building Information Modeling**
- Modular Construction
- Self-healing concrete
- Drones
- Robotics
- Cloud and mobile technology
- Advanced uses for GPS
- Wearable technology

<https://geniebelt.com>

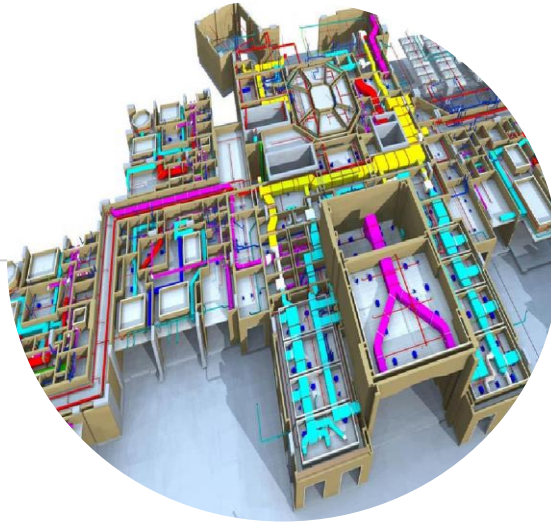


“O BIM é o **ponto de viragem** para o Setor da Construção.”

Roland Berger, 2017



“



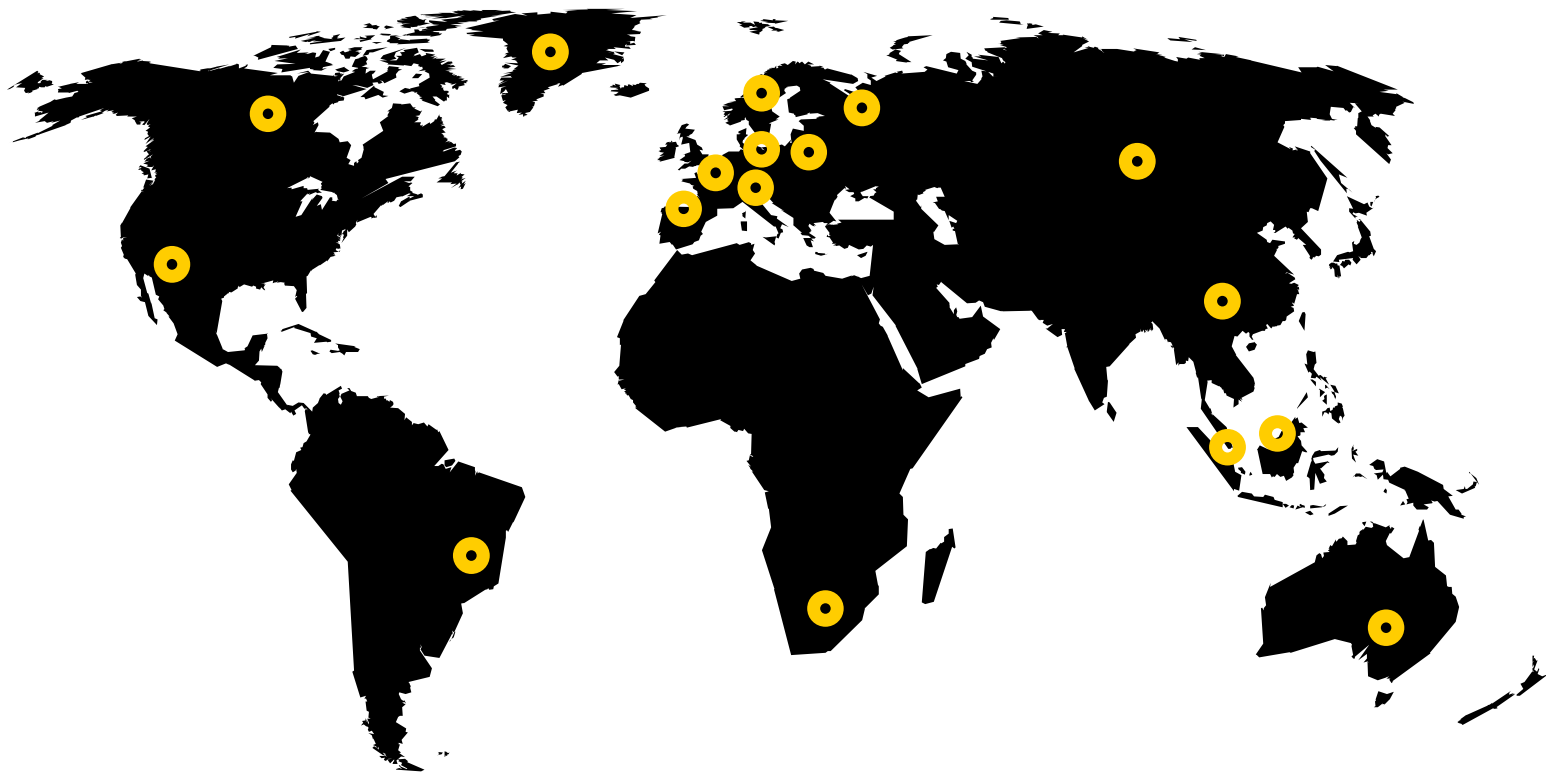
Building Information Modeling

Processo de criação e gestão de **informação** associada a um edifício através da sua representação digital, para projeto, construção e operação, ao longo do seu ciclo de vida.



BIM no Mundo

Exemplos de implementação Governamental



“O futuro está aqui e chegou o momento de construir uma abordagem europeia comum para o setor da construção.”

Handbook – EU BIM Task Group, 2017

Comissária Europeia Elżbieta Bienkowska



“

2

BIM para fabricantes

Objetos BIM



“Para além de uma necessária **modernização do setor**, está em causa a **capacidade de exportação** de serviços de empresas nacionais para mercados onde o BIM seja obrigatório e a **competitividade das empresas** nacionais em mercados internacionais...”

BIM e a Digitalização da Construção e Infraestruturas

COTEC - Associação Empresarial para a Inovação, Julho 2018

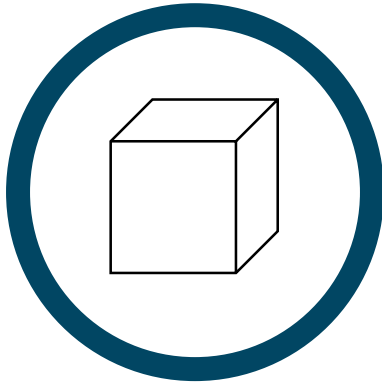


“



Objetos BIM?

Muito mais que um 3D!



Modelação



Informação

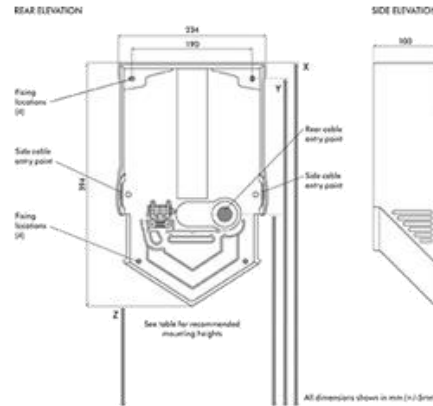


Divulgação

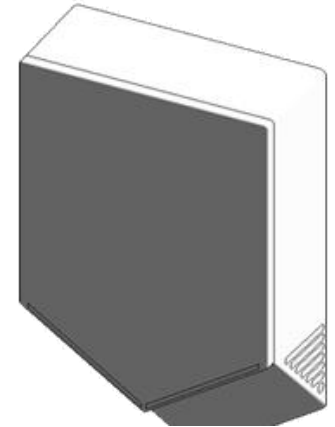
Objetos BIM



Informação não-gráfica

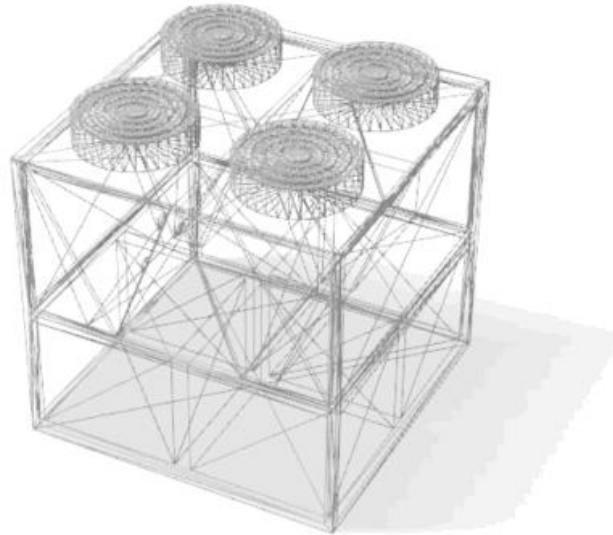


Informação gráfica



Objetos BIM

Modelação



www.nationalbimlibrary.com

R REVIT

GRAPHISOFT
ARCHICAD

v | **VECTORWORKS**
A NEMETSCHKE COMPANY

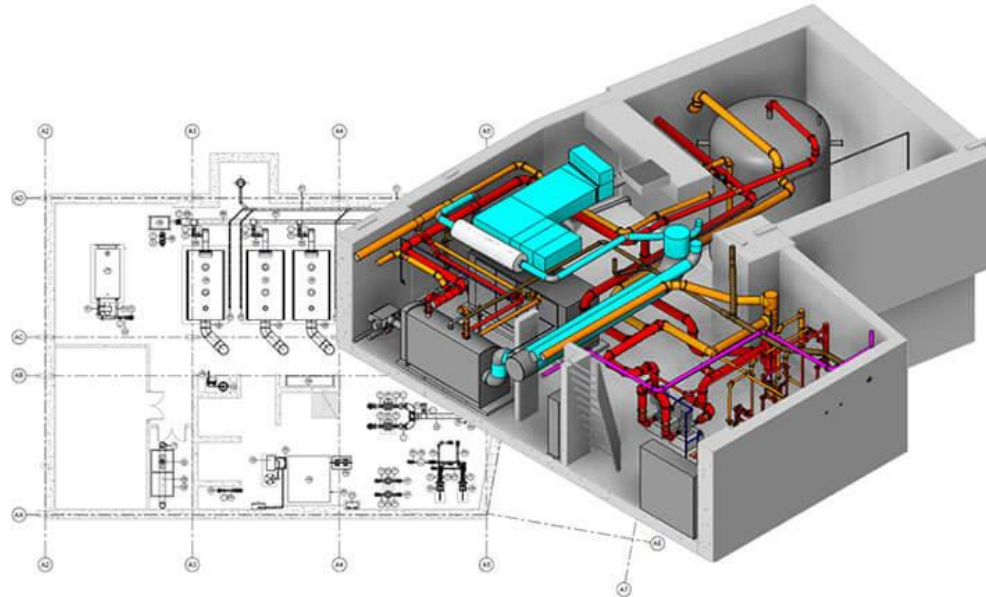
61 Softwares Certificados!

 **buildingSMART**
International

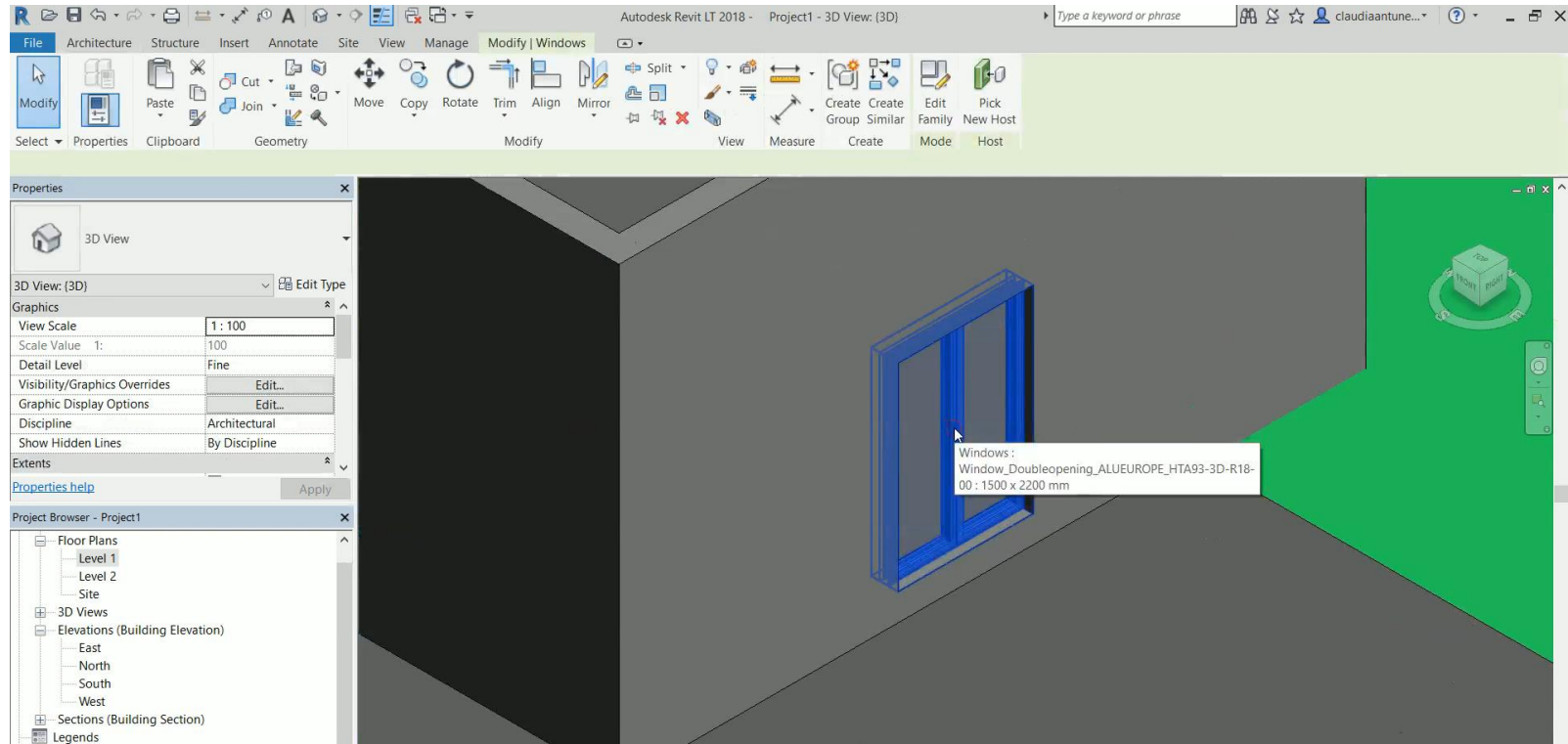
● Modelação

CAD

BIM



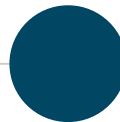
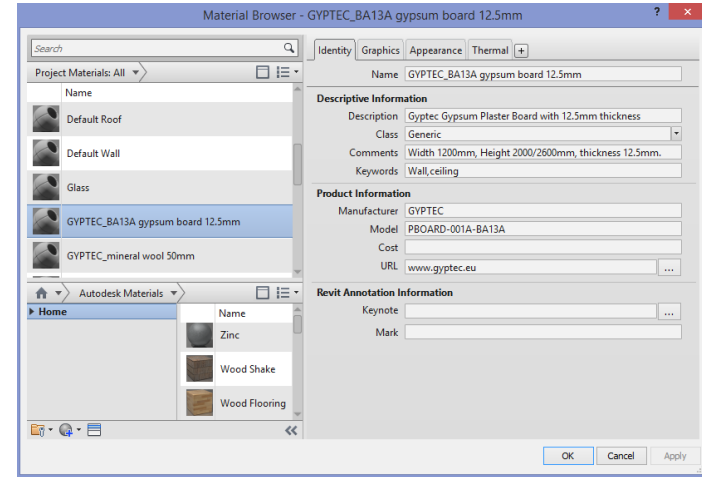
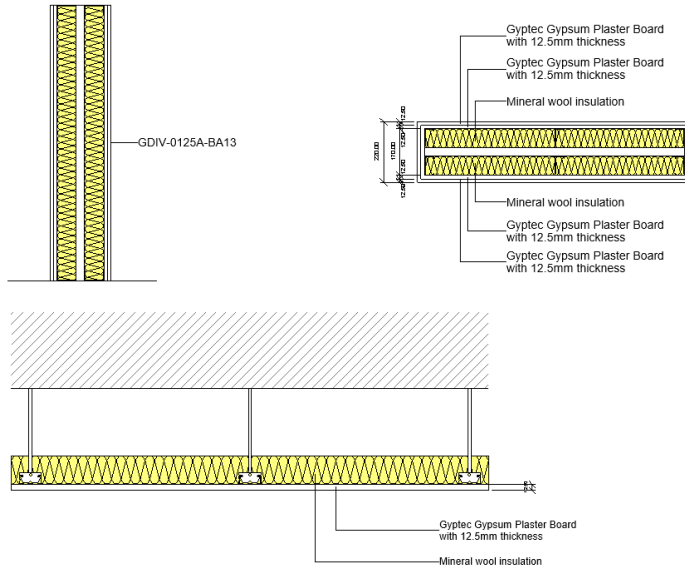
Informação



3

Soluções BIM

Exemplos StratBIM®



Type Properties ✕

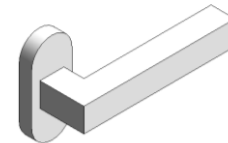
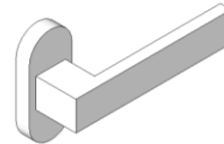
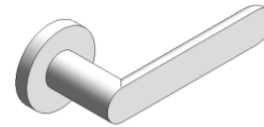
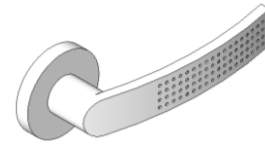
Family:

Type:

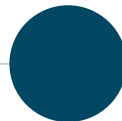
Type Parameters

Parameter	Value
Construction	
Wall Closure	By host
Construction Type	
Materials and Finishes	
HTA93F-Mullion_Finish<Windows>	SingleFixed_ALUEUROPE_HTA93-3D-windowpanel-00: 312 Cherry
Dimensions	
Width	Window_SingleFixed_ALUEUROPE_HTA93-3D-windowpanel-00: 314 oak
Height	Window_SingleFixed_ALUEUROPE_HTA93-3D-windowpanel-00: 316 Beech
Rough Width	Window_SingleFixed_ALUEUROPE_HTA93-3D-windowpanel-00: 318 american oak
Rough Height	Window_SingleFixed_ALUEUROPE_HTA93-3D-windowpanel-00: 328 pine
	Window_SingleFixed_ALUEUROPE_HTA93-3D-windowpanel-00: 330 renolite textured
	Window_SingleFixed_ALUEUROPE_HTA93-3D-windowpanel-00: 340 renolite
Analytical Properties	
Analytic Construction	<None>
Visual Light Transmittance	
Solar Heat Gain Coefficient	
Thermal Resistance (R)	
Heat Transfer Coefficient (U)	
Identity Data	
Keynote	
Model	LTA 03

<< Preview



serialu



CROMÁTICA

remix & cuts



revigres[®] PRO

chromatic_ cromática

revigres[®]



30x30
[29,0x29,0 cm]

NAT * ± 0.88 cm
MATT (2) ± 0.88 cm
SOFT ± 0.88 cm
PDL ± 0.80 cm



30x30
[29,0x29,2 cm]

MATT (2) ± 0.88 cm
SOFT ± 0.88 cm
PDL ± 0.80 cm



30x30
[29,2x29,2 cm]

MATT (2) ± 0.88 cm
MATT xxxx ± 1.40 cm
SOFT ± 0.88 cm
PDL ± 0.80 cm



90x90
[89,0x89,0 cm]

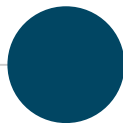
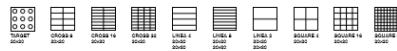
MATT (2) ± 1.08 cm
SOFT ± 1.08 cm
PDL ± 0.98 cm



90x120
[89,2x118,4 cm]

MATT (2) ± 0.98 cm
SOFT ± 0.98 cm
PDL ± 0.98 cm

*	**	***	****
BRANCO	GRANITE	ANTHRAZITE	ASB PRINX
ICE	PRETO	ICE	ASTRAL
PLATINA	SUPERBRANCO	RDV	BRANCO
PRETO		48°	GRANITE
SUPERBRANCO		QUATRO	PRETO
		SUPERBRANCO	SUPERBRANCO



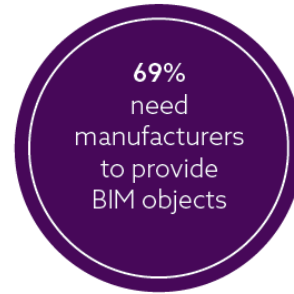
work in progress



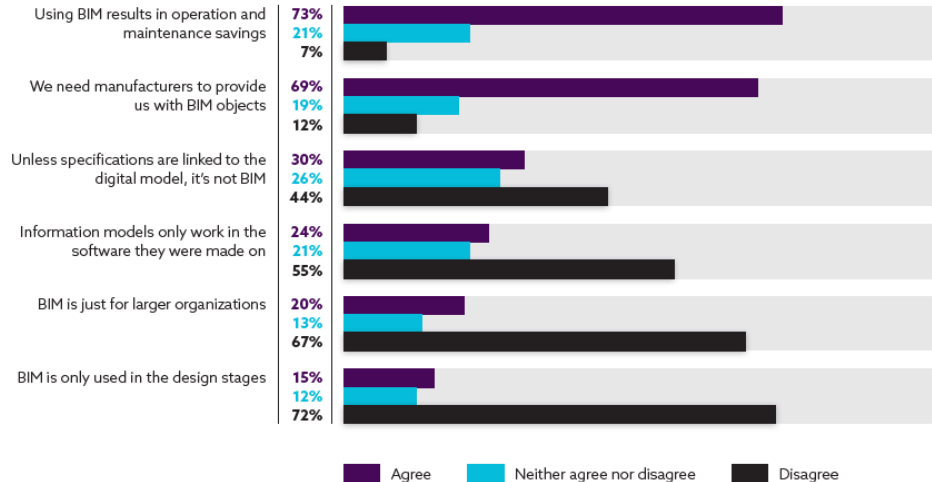
Conclusões

Almost three quarters (73%) believe that BIM results in operation and maintenance savings.

Over two thirds (69%) need manufacturers to provide BIM objects, and a substantial majority of respondents disagree that BIM is just for larger organizations or only used in the design stages. This all suggests that construction professionals continue to believe in BIM, and that many of those not yet using it do plan to.



Attitudes to BIM

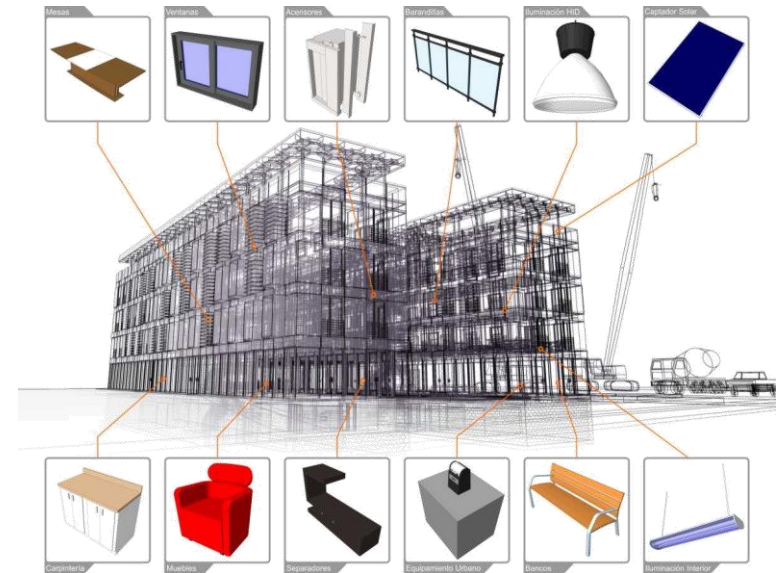


Porquê BIM para Fabricantes?

Algumas vantagens.

- Facilidade de divulgação dos produtos
- Integração direta dos produtos em projetos BIM
- Disponibilização automática dos produtos
- Apoio aos utilizadores e potenciais clientes
- Substituição de catálogos físicos
- Apoio ao Marketing e vendas

O momento é agora!



OBRIGADA!

Cláudia Antunes
claudiaantunes@stratbond.com
914 969 065